



MAKE

BRISTOL

A LIVINGSTON

SPECIALLY

**'MAKE BRISLINGTON SPECIAL'
WAS A COMMUNITY CONSULTATION
EVENT UNDERTAKEN DURING THE
MAKE SUNDAY SPECIAL EVENT
'BRIZZLEWOOD' IN SEPTEMBER
2016. IT WAS DONE BY LOCAL
PRACTICE BAREFOOT ARCHITECTS
AS VOLUNTARY WORK WITHOUT
ANY AGENDA OR AFFILIATION.**

**WE SPOKE WITH OVER 400 LOCAL
PEOPLE AND HERE ARE THE
RESPONSES GATHERED. THANK
YOU FOR TALKING TO US!**

SAM GOSS
director, barefoot architects



BRIZZLEWOOD : A COMMUNITY EVENT

This report compiles comments and ideas from local people about Brislington, collected at ‘Brizzlewood’; a community event on Hollywood Road in September 2016 which was part of the Make Sunday Special series supported by Bristol City Council. Local people were asked what they like and dislike about the area, and what ideas they have for its future. We hope that the information collated will instigate and inform debate about the future of Brislington and provide inspiration for the community and the council to initiate positive change in the area.

This report was put together by Barefoot Architects, a local practice offering contemporary design that is forward thinking, and socially & environmentally aware. We set up Barefoot Architects to influence the industry and empower individuals and communities to build a better future. We are based at the Paintworks, and Sam lives here in Brislington. We wanted to get to know our community better, meet people and hear their stories, and find out what makes Brislington special, and how it could be better still! We have undertaken this work for free, because we care about our community, and because we want to help to try and make a brighter future for the area.

barefoot architects

RIBA
Chartered Practice

who are we?

We are a local practice based at the Paintworks, and Sam lives here in Briz. We offer contemporary design that is forward thinking, and socially & environmentally aware. We set up Barefoot Architects to influence the industry and empower individuals and communities to build a better future.

why are we here?

We wanted to get to know our community better, meet people and hear their stories. We want to know what makes Briz Briz? What gives it it's character; where are the good bits, and the bad! We want to find out what makes it special, and how it could be better still.....!

what are we doing?

We're asking you questions, and want as many ideas and opinions as possible about our community. We're doing it for free, because we care, and because we want to help to try and make a brighter future for the area. Any information we gather will be given back to the community and can be used to inform the council of what the people of the area want and need.

what can you do?

You can help by pinning your ideas and stories on each of the following maps of your favourite things and places, your pet hates, and your most ambitious and brilliant ideas for things you'd like to see happen here! Think big. Think bold. Think Brislington.

what would make you say
YES IN MY BACK YARD

What makes Brislington special?
Tell us your favourite place / thing

01

Make Brislington Special

barefoot architects

What doesn't make Brislington special?
Tell us what you hate and why

02

Make Brislington Special

barefoot architects

What could make Brislington more special?
Tell us your ideas for improvements

03

Make Brislington Special

barefoot architects

The four boards used for the event

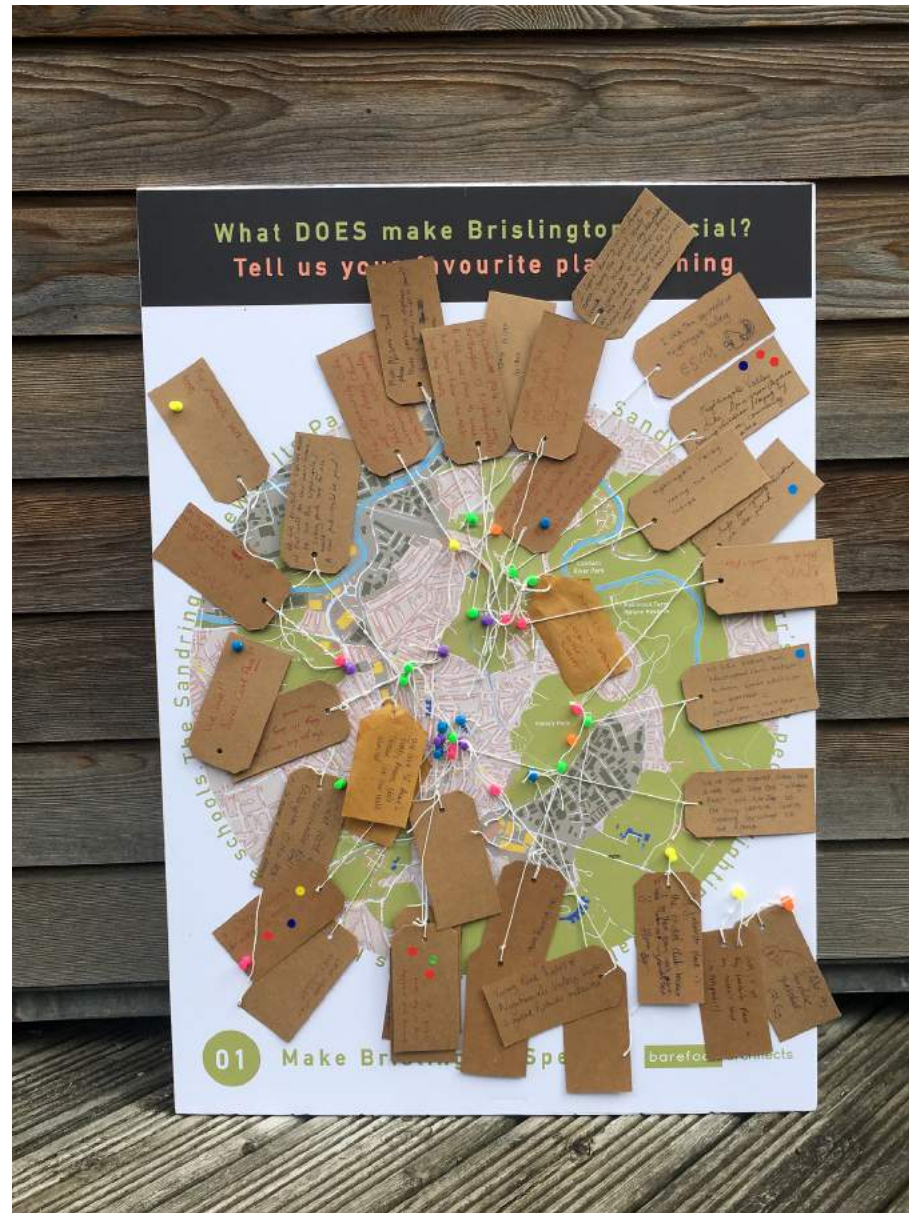
THE GOOD, THE BAD, & THE FUTURE

We set up a stall at Brizzlewood: Make Sunday Special', a community event on Hollywood Road in Brislington, and asked local people to tell us about their neighbourhood. We wanted to find out where the good bits are, and the bad, and what ideas local people had for Brislington's future. We spoke to hundreds of people, and asked them to pin their ideas and stories onto maps of the area, and endorse other people's ideas by adding stickers to their comments.



3 QUESTIONS : LOTS OF ANSWERS

The photos below show the boards with comments and ideas pinned on. We've taken each of the tags and added them to a database, and then grouped similar comments together to get an idea of the biggest issues and most popular ideas. We have displayed each key idea on a tag on the following pages, and listed the various comments we received relating to that idea. The numbers next to each tag represent the number of people who suggested or supported the idea.



What DOES make Brislington special?



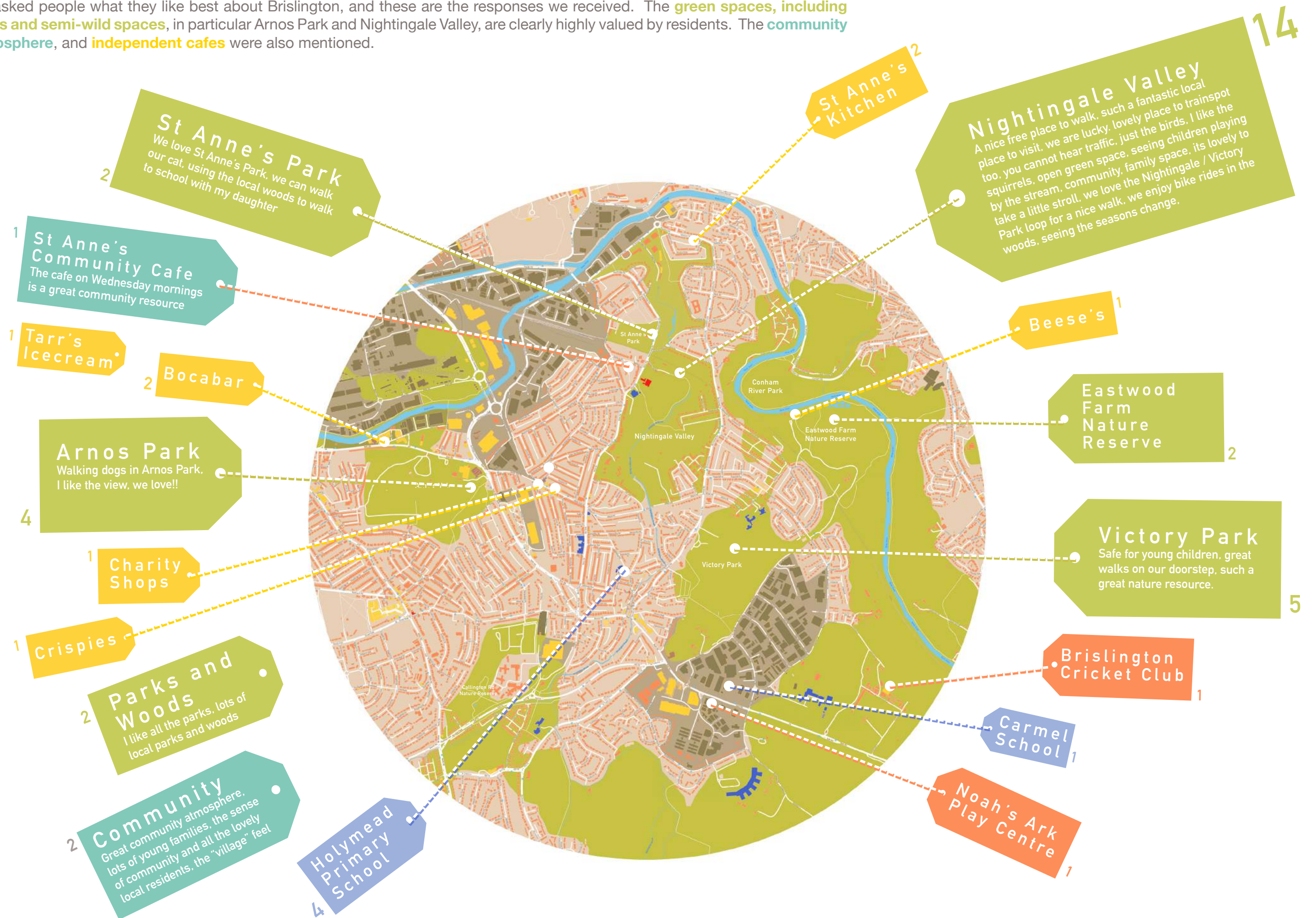
What DOESN'T make Brislington special?



What could make Brislington MORE special?

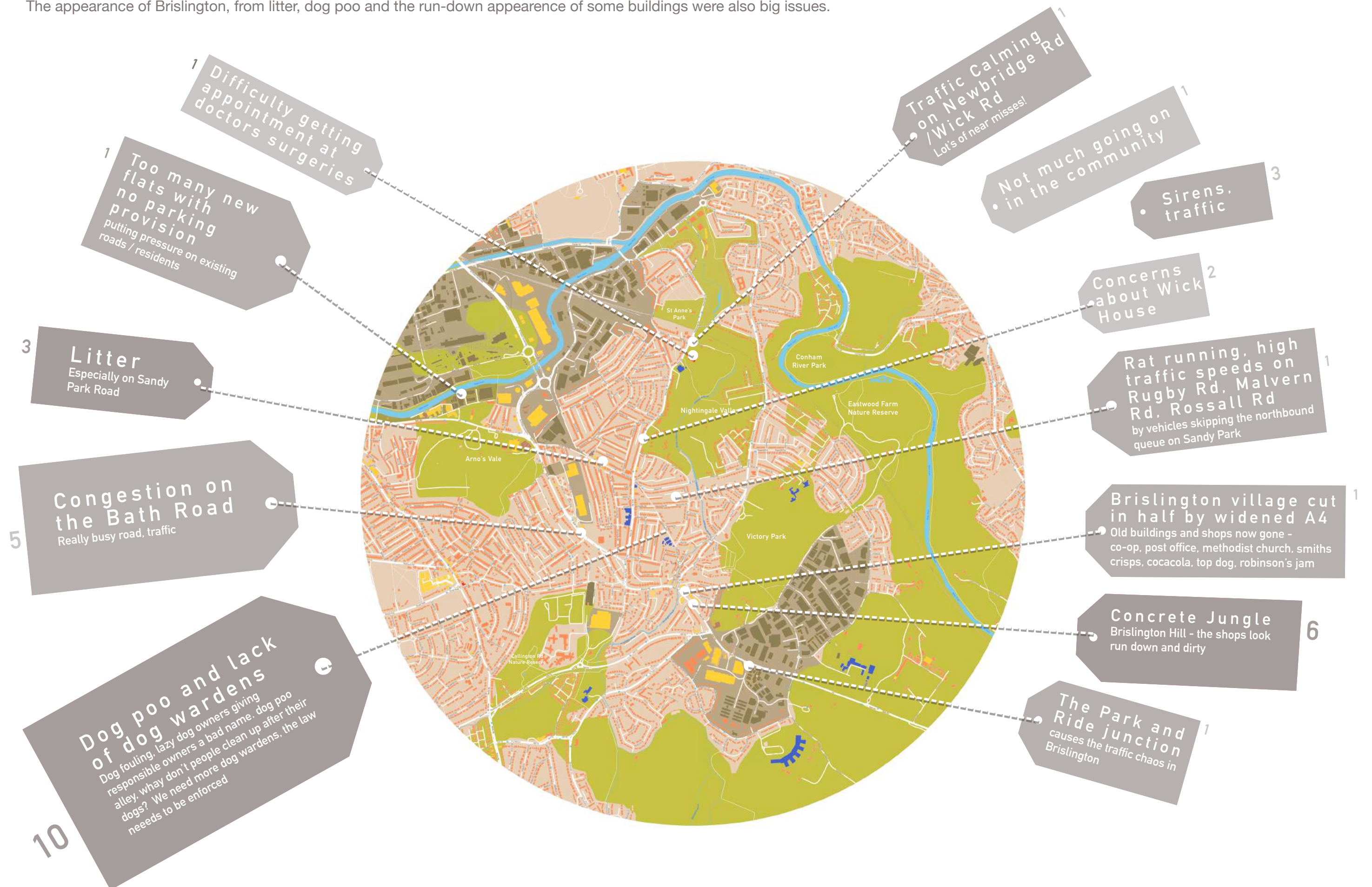
What DOES Make Brislington Special?

We asked people what they like best about Brislington, and these are the responses we received. The **green spaces**, including **parks and semi-wild spaces**, in particular Arnos Park and Nightingale Valley, are clearly highly valued by residents. The **community atmosphere**, and **independent cafes** were also mentioned.



What DOESN'T Make Brislington Special?

Problems with traffic and the impact of cars, particularly along the Bath Road, were the main concerns from the residents we spoke to. The appearance of Brislington, from litter, dog poo and the run-down appearance of some buildings were also big issues.



What Could Make Brislington MORE Special?

We received a lots of ideas for making Brislington a better place. These ranged from important improvements to the existing **parks and green spaces**, a better range of **local shops and pubs**, to more **arts and community spaces**.

